



**P O R T A F I L L**

**2000CT**

**PARTS MANUAL**

**(Serial Number SCT 419 Onward)**





**This machine is designed and engineered by:**

Portafill International Limited,  
29 Farriter Road, Cabragh,  
Dungannon, Co. Tyrone,  
N. Ireland, BT70 1TL.

<http://www.portafill.com>

t: +44 28 8776 9467

f: +44 28 8776 9468

e: [support@portafill.com](mailto:support@portafill.com)

## Copyright Notice

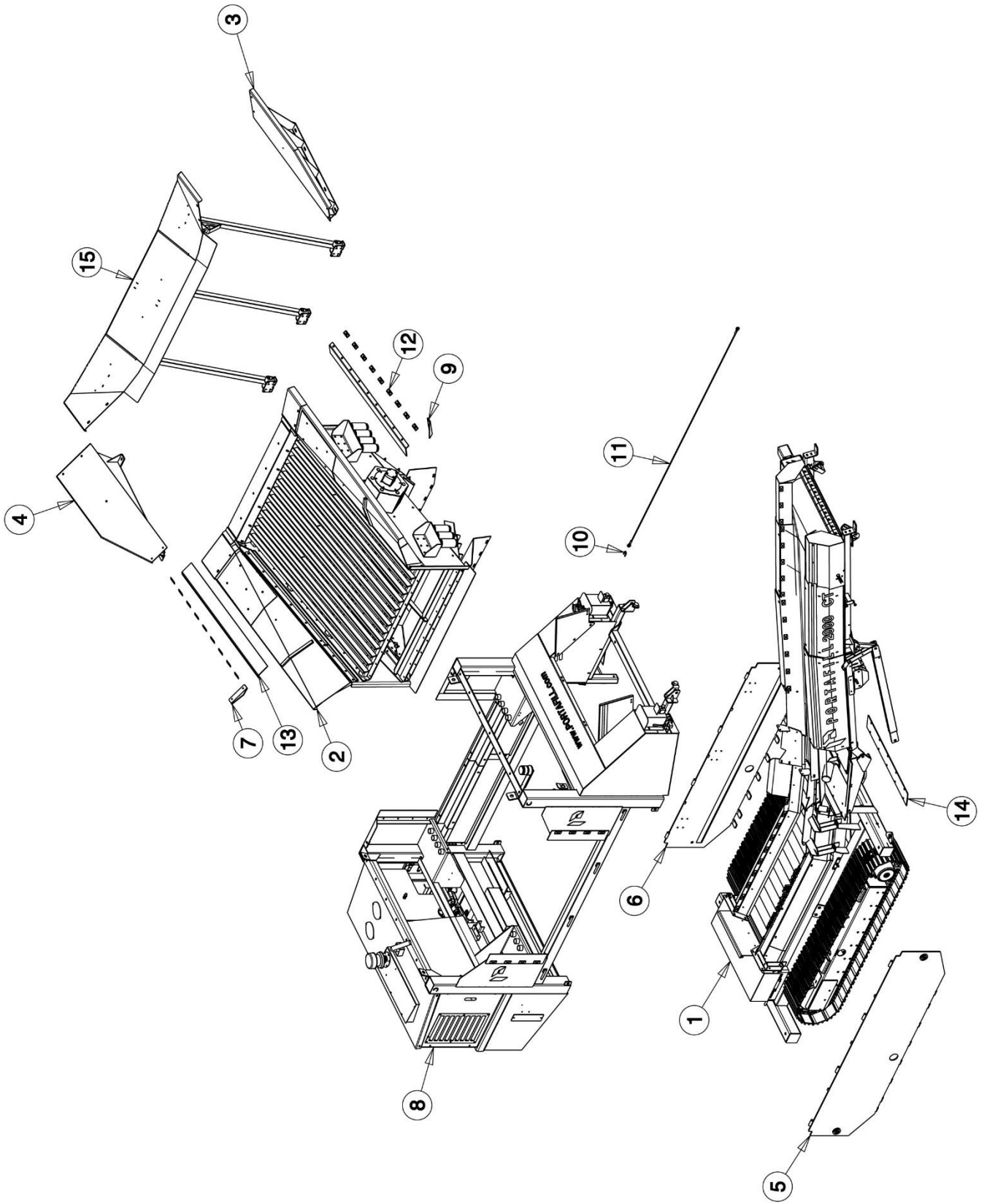
Information in this document is subject to change without notice. The names of companies, products, people, characters and/or data mentioned herein are fictitious and are in no way intended to represent any real individual, company product or event, unless otherwise noted. Complying with all applicable copyright laws is the responsibility of the user. No part of this document may be reproduced or transmitted in any form or by any means, electronic or mechanical, for any purpose, without the express written permission of Portafill International Ltd. If, however, your only means of access is electronic, permission to print one copy is hereby granted.

© 2016 Portafill International. All rights reserved.

(This page was intentionally left blank)

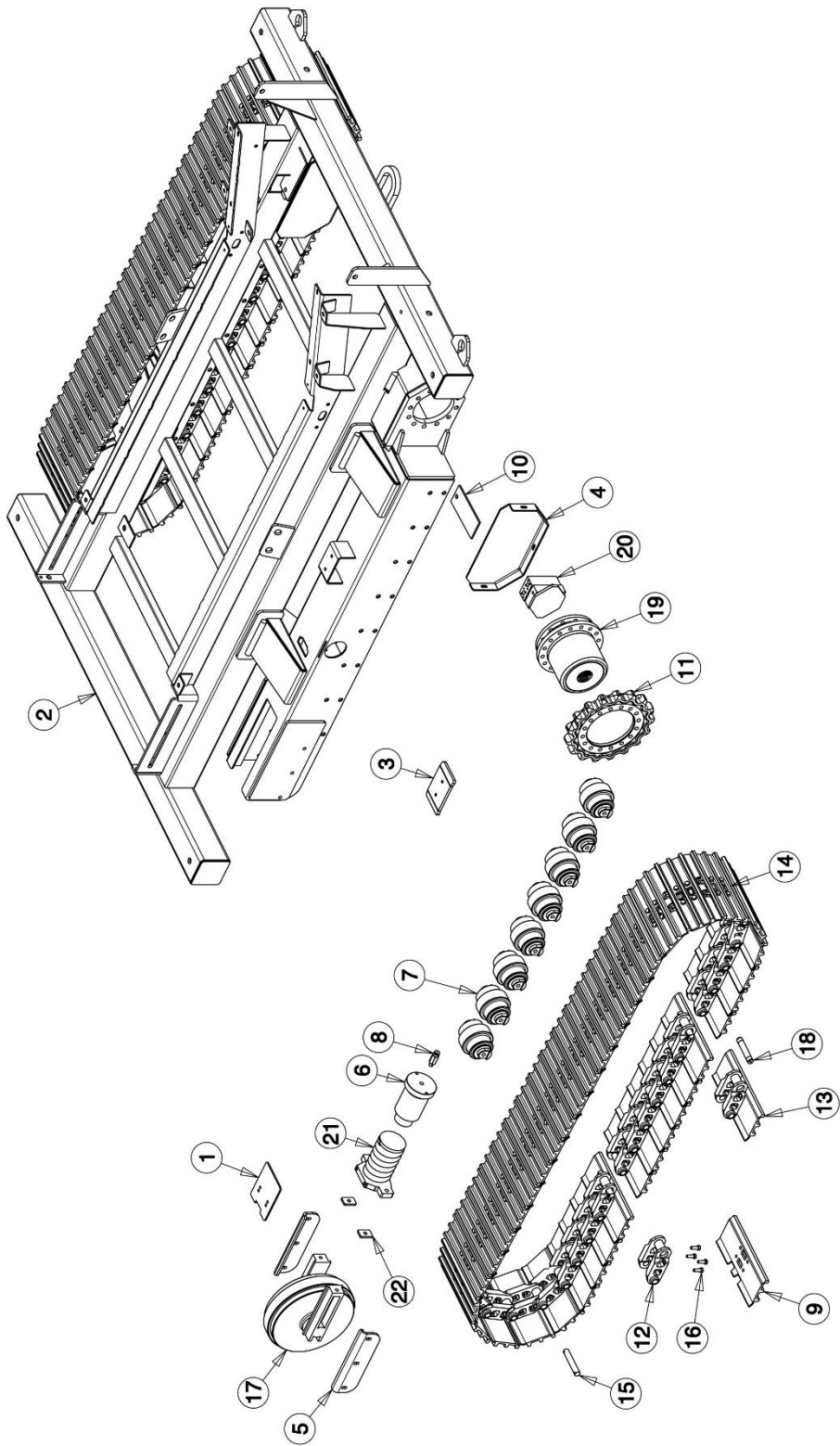
# Contents

FIGURE 1 – PORTAFILL 2000CT .....	3
FIGURE 2 - CHASSIS TRACKS.....	5
FIGURE 3 - FRONT CONVEYOR .....	7
FIGURE 4 - FRONT CONVEYOR EMERGENCY STOP .....	9
FIGURE 5 - CONVEYOR HEAD SECTION .....	11
FIGURE 6 – DRIVE DRUM ASSEMBLY .....	13
FIGURE 7 – SCRAPER ASSEMBLY .....	15
FIGURE 8- CONVEYOR MID SECTION .....	17
FIGURE 9 - CONVEYOR TAIL SECTION .....	19
FIGURE 10 - CONVEYOR FEEDBOOTS.....	21
FIGURE 11 - HYDRAULIC TANK.....	23
FIGURE 12 – ENGINE UNIT .....	25
FIGURE 13 – POWER UNIT .....	27
FIGURE 14 – CHASSIS ASSEMBLY .....	29
FIGURE 15 - VALVE (ITEM 6773) .....	31
FIGURE 16 - VALVE (ITEM 6797) .....	33
FIGURE 17 – SCREEN EXTENSIONS.....	35
FIGURE 18 – SCREEN BOX .....	37
FIGURE 19 – SCREEN SHAFT ASSEMBLY.....	39
FIGURE 20 – SCREEN CHUTE & RUBBERS .....	41
FIGURE 21 - CONTROL PANEL ACCESSORIES .....	43
FIGURE 22 - ELECTRICAL ACCESSORIES.....	45
FIGURE 23 - TRACKING RADIO REMOTE .....	47



## FIGURE 1 – PORTAFILL 2000CT

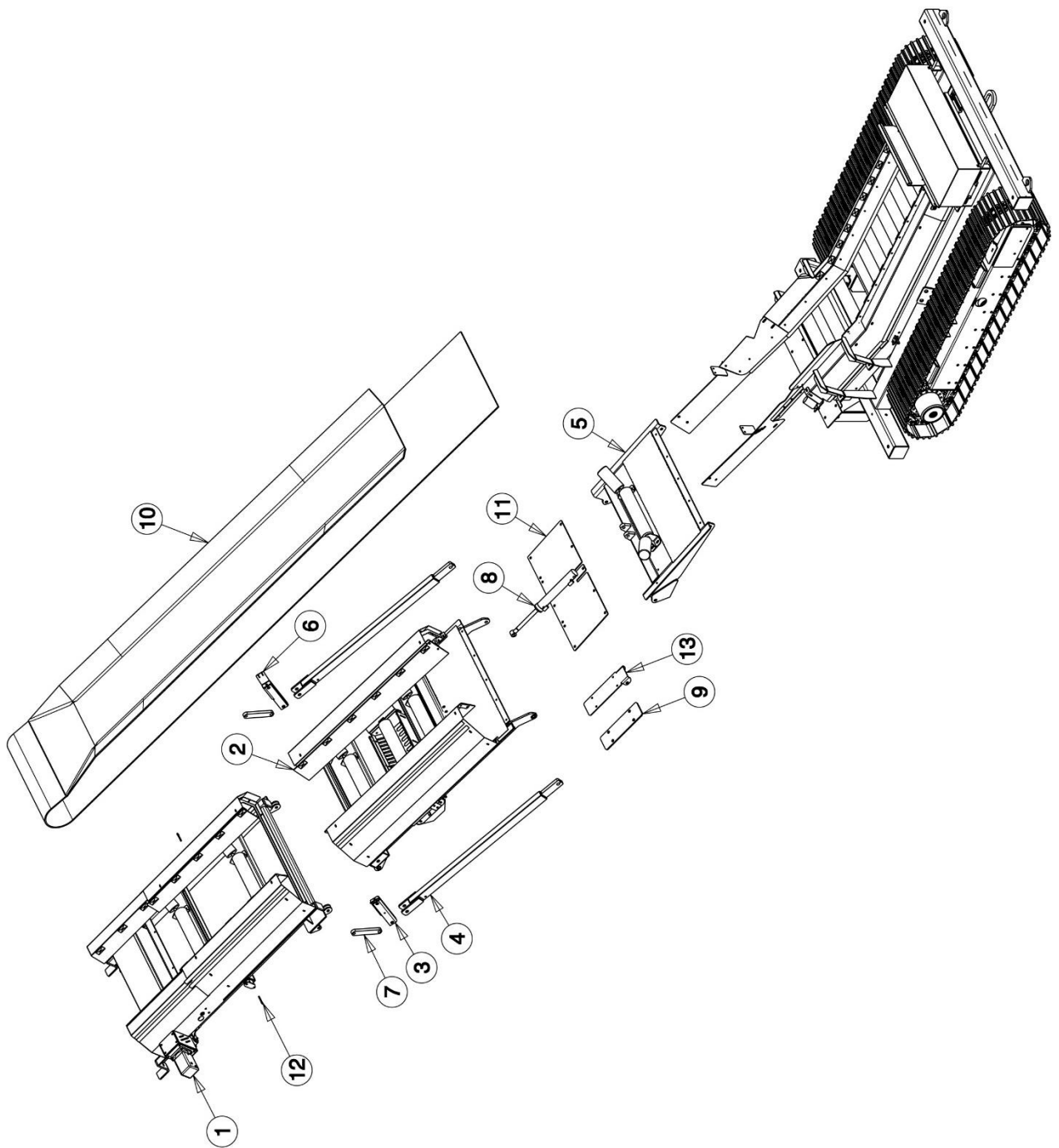
ITEM	PART NO	DESCRIPTION	QTY
1	1453	TRACK SECTION	1
2	1507	SCREEN SECTION	1
3	1608	BOLT-ON EXTENSION	1
4	1609	BOLT-ON EXTENSION	1
5	1622	TRACK SIDE PLATE	1
6	1623	TRACK SIDE PLATE	1
7	1759	EXHAUST GUARD	1
8	1774	CHASSIS SECTION	1
9	2145	EXHAUST GUARD	1
10	2664	U-BOLT	1
11	2860	WIRE ROPE	1
12	3986	CLAMP PLATE	18
13	6034	SCREEN EXTENSION RUBBER	2
14	6035	CONVEYOR 1 <sup>ST</sup> JOINT RUBBER	1
15	21625	EXTENSION FEEDBOOT ASSEMBLED	1





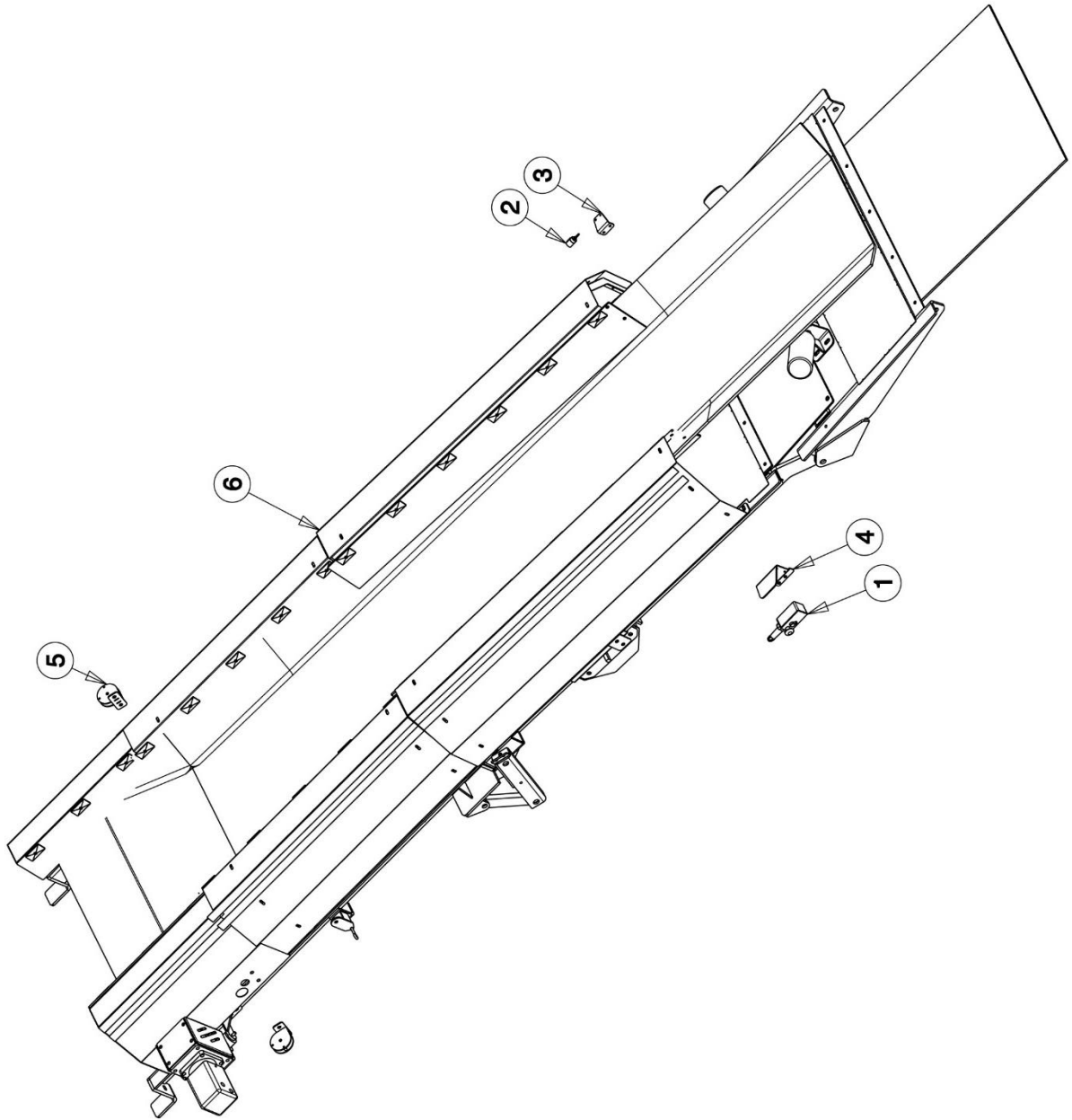
## FIGURE 2 - CHASSIS TRACKS

ITEM	PART NO	DESCRIPTION	QTY
1	1180	TENSIONER COVER	2
2	1444	TRACK FRAME	1
3	1457	TRACK SLIDE	2
4	1540	TRACK PIPE GUARD	2
5	1596	SPROCKED WHEEL GUIDE	4
6	2025	TRACK RAM TENSIONER	2
7	2961	TRACK ROLLER	16
8	3053	TRACK TENSIONER VALVE	2
9	5820	140 MM CENTRE TRACK SHOE	80
10	6047	TRACK PIPES RUBBER	2
11	6073	SPROCKET	2
12	6078	140 MM CENTRE TRACK LINK (25 PIN)	80
13	6079	140 MM CENTRE TRACK LINK (25 PIN) ASSEMBLED	80
14	6708	TRACK COMPLETE (40 LINK) WITH 400 MM SHOES	2
15	6789	TRACK PIN	78
16	7214	TRACK BOLT	320
17	8202	IDLER WHEEL	2
18	8722	MASTER TRACK PIN	2
19	9264	TRACK DRIVE GEARBOX	2
20	9265	BOSCH REXROTH MOTOR	2
21	17039	IDLER SPRING	2
22	21504	IDLER SPACER PLATE	4



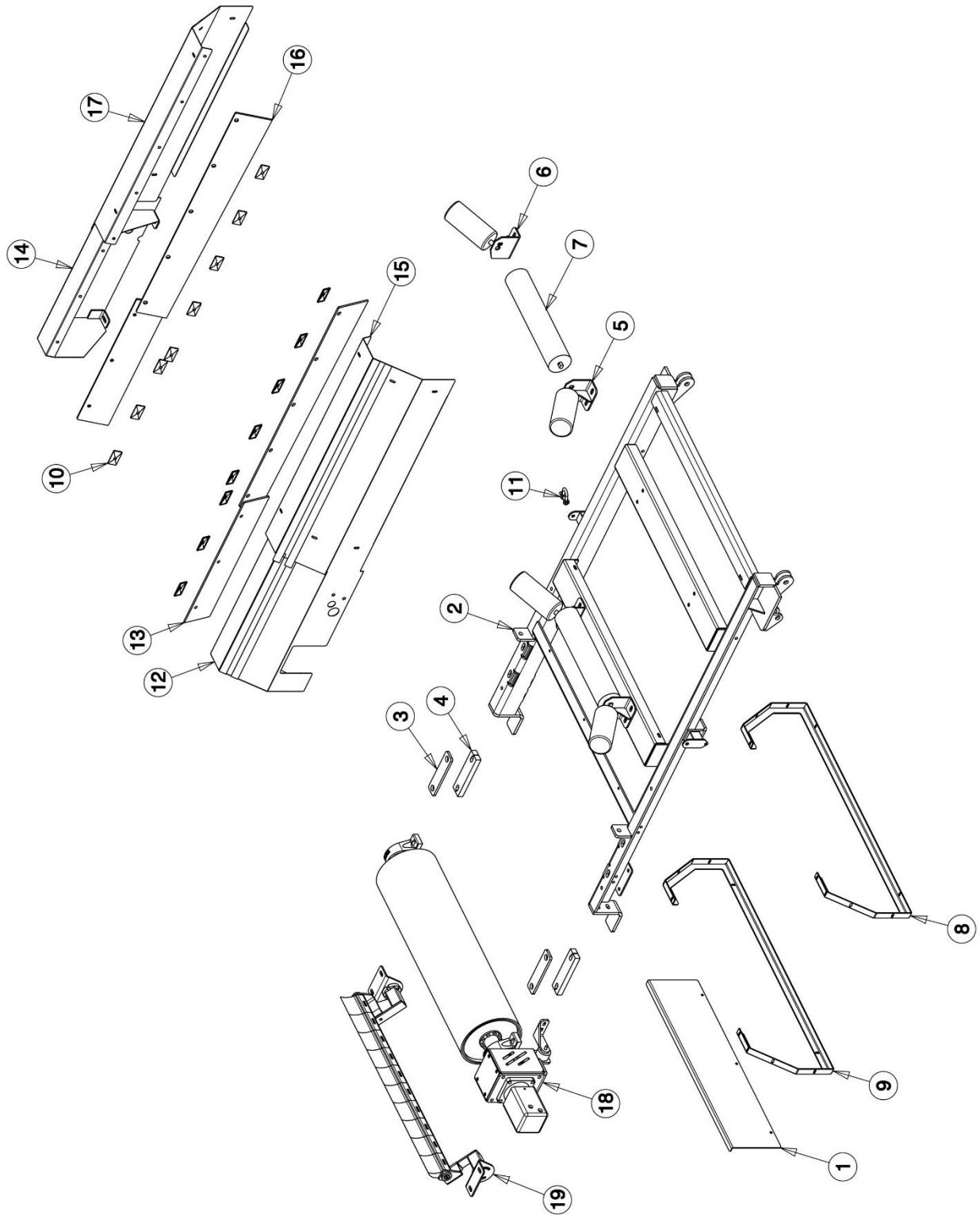
### FIGURE 3 - FRONT CONVEYOR

ITEM	PART NO	DESCRIPTION	QTY
1	1486	CONVEYOR HEAD SECTION	1
2	1487	CONVEYOR MIDDLE SECTION	1
3	1520	LINKAGE BOX	1
4	1521	TRESTLE ARM	2
5	1674	CONVEYOR TAIL SECTION	1
6	2011	CONVEYOR LINKAGE	1
7	2072	CONVEYOR FOLD LINK	2
8	2816	RAM (60 BORE – 310 STROKE)	2
9	5203	RAM COVER STRIP	1
10	5935	CONVEYOR BELT	1
11	6036	CONVEYOR 2 <sup>ND</sup> JOINT RUBBER	1
12	8731	CORD EYE BOLT	2
13	16694	NYLON SUPPORT	1



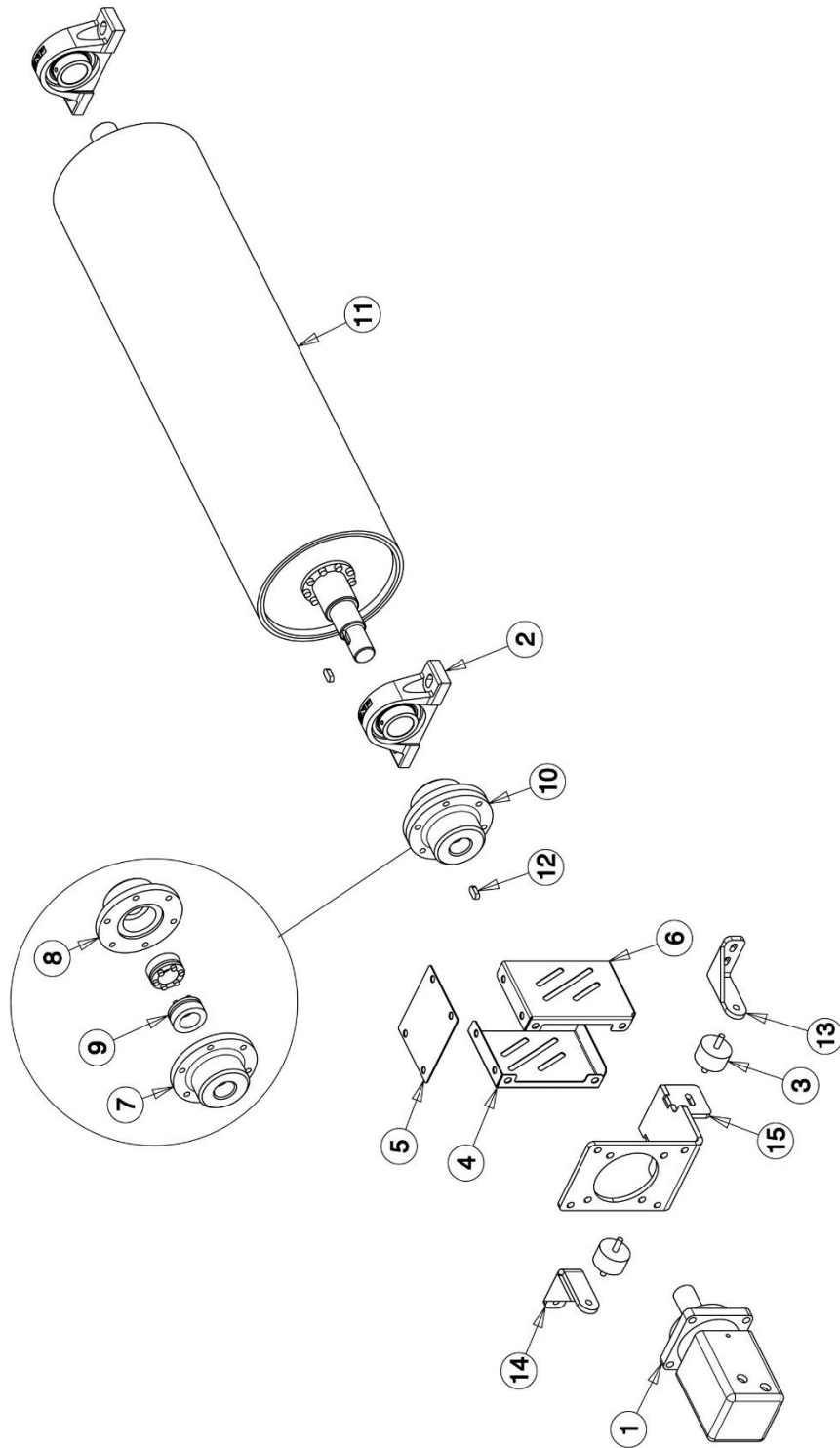
## FIGURE 4 - FRONT CONVEYOR EMERGENCY STOP

ITEM	PART NO	DESCRIPTION	QTY
1	8726	MACHINE STOP	1
2	8729	MACHINE STOP PULLCORD	1
3	8730	PULLCORD BRACKET	1
4	11037	EMERGENCY STOP BRACKET	1
5	11046	PULLEY BRACKET	2
6	11485	FRONT CONVEYOR	1



## FIGURE 5 - CONVEYOR HEAD SECTION

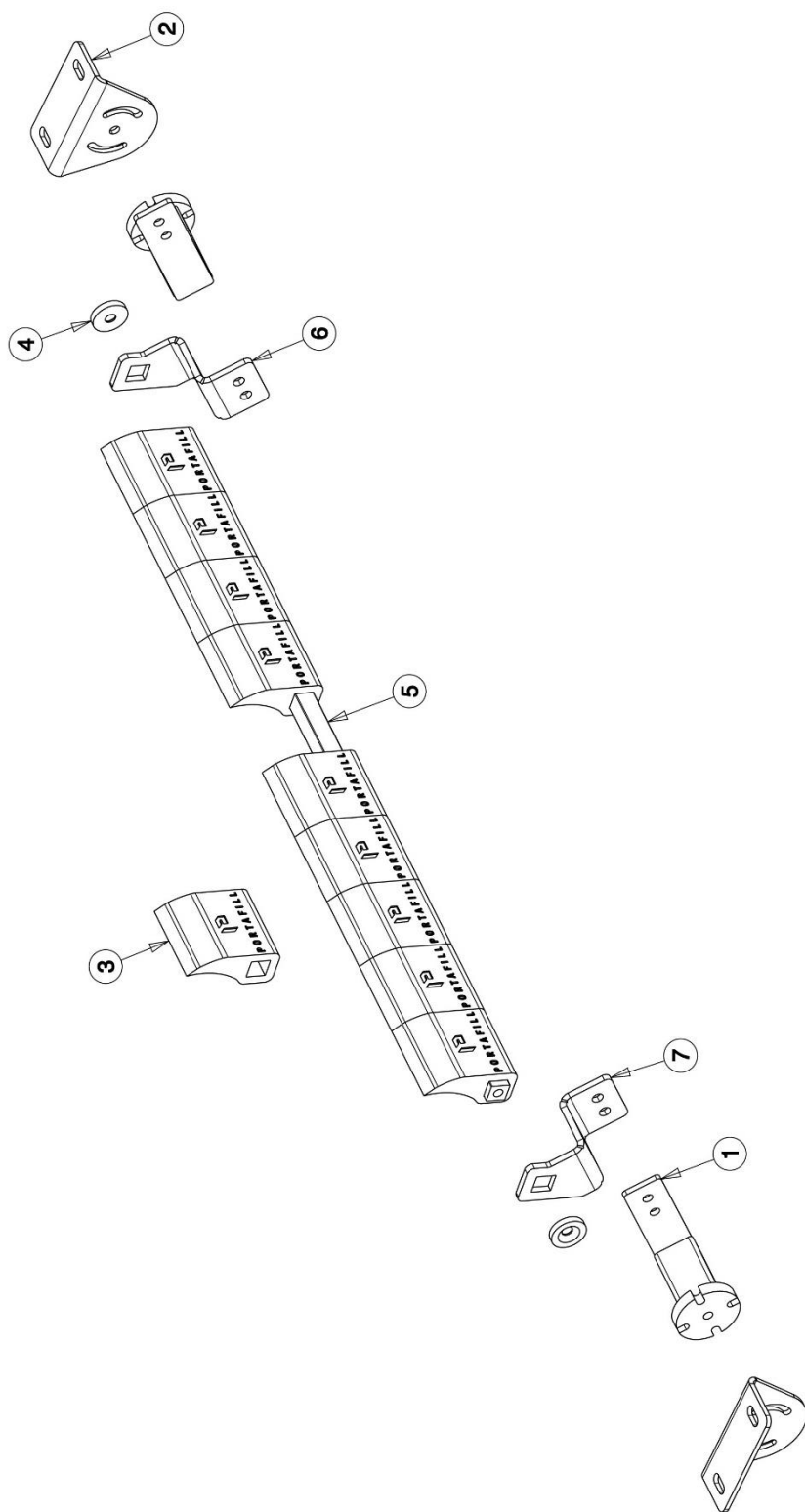
ITEM	PART NO	DESCRIPTION	QTY
1	1069	END DRUM GUARD	1
2	1352	CONVEYOR HEAD FRAME	1
3	1355	HEAD DRUM SPACER	2
4	1358	HEAD DRUM BEARING PACKER	2
5	1492	30 DEG LH WING ROLLER	2
6	1494	30 DEG RH WING ROLLER	2
7	1495	CENTRE ROLLER	2
8	1515	CONVEYOR GUARD HOLDER	1
9	1517	CONVEYOR GUARD HOLDER	1
10	3986	CLAMP PLATE	16
11	5933	D-SHACKLE	1
12	7581	CONVEYOR HEAD GUARD	1
13	7582	SKIRTING RUBBER	2
14	7584	CONVEYOR HEAD GUARD	1
15	7585	CONVEYOR GUARD	1
16	7586	CONVEYOR SKIRTING	2
17	7587	CONVEYOR GUARD	1
18	8124	DRIVE DRUM ASSEMBLED	1
19	8238	SCRAPER	1





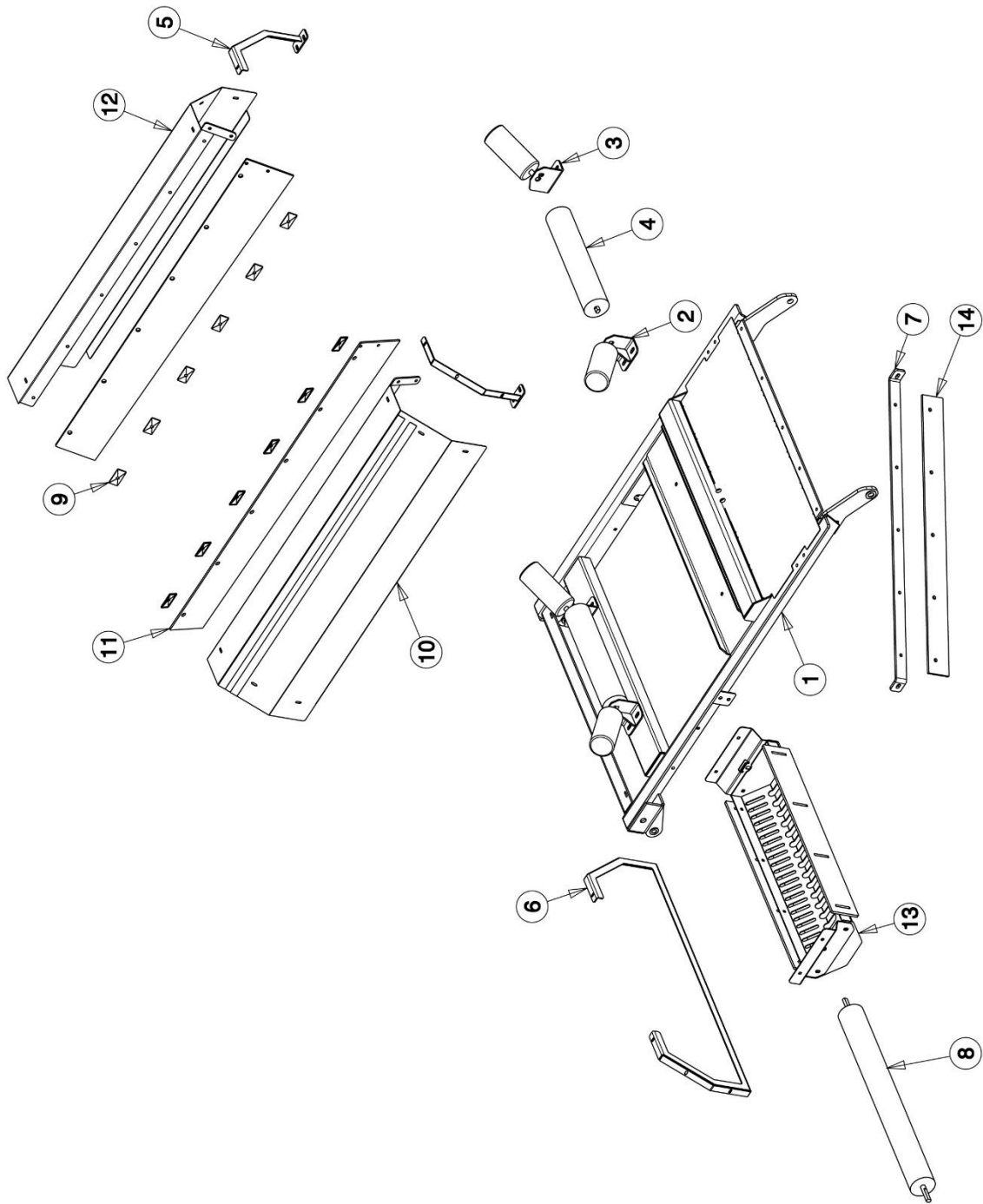
## FIGURE 6 – DRIVE DRUM ASSEMBLY

ITEM	PART NO	DESCRIPTION	QTY
1	1363	HYDRAULIC MOTOR	1
2	1681	SY BEARING	2
3	2318	RUBBER DAMPER	2
4	7238	COUPLING GUARD	1
5	7239	COUPLING BOTTOM GUARD	1
6	7240	COUPLING GUARD	1
7	8059	COUPLING HALF	1
8	8060	COUPLING HALF	1
9	8061	40 MM FENLOCK	2
10	8062	COUPLING ASSEMBLY	1
11	8123	DRIVE DRUM	1
12	11067	12 X 8 X 28MM LONG KEYSTEEL	2
13	12594	DAMPER MOUNT (RHS)	1
14	12595	DAMPER MOUNT (LHS)	1
15	15964	MOTOR BRACKET FABRICATED	1



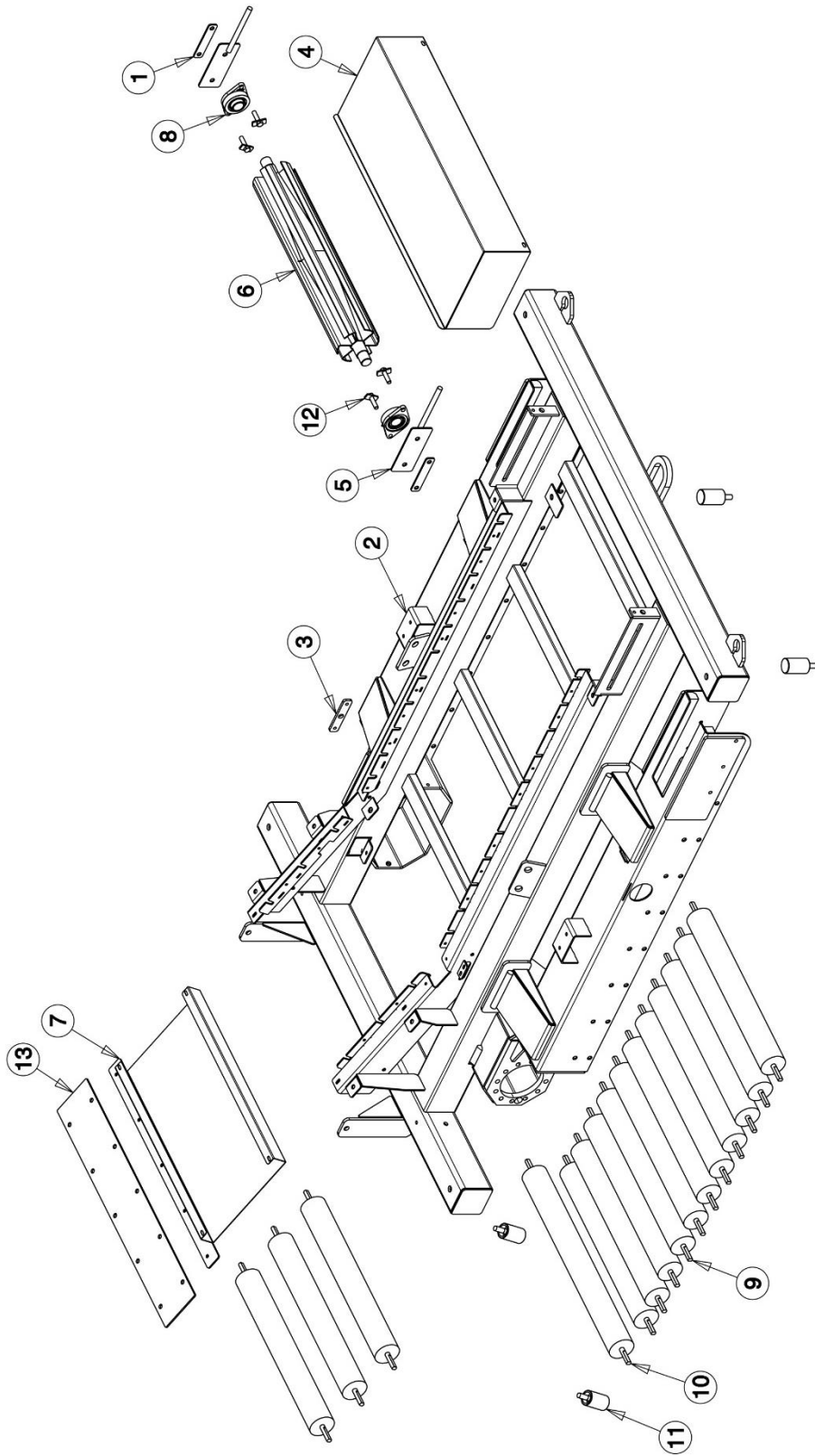
## FIGURE 7 – SCRAPER ASSEMBLY

ITEM	PART NO	DESCRIPTION	QTY
1	1683	ROSTA TENSIONER	2
2	1684	TENSIONER BRACKET	2
3	8206	DRUM SCRAPER RUBBER	10
4	8210	END PLATE	2
5	8237	SCRAPER BAR	1
6	14299	SCRAPER MOUNT BRACKET	1
7	14300	SCRAPER MOUNT BRACKET	1



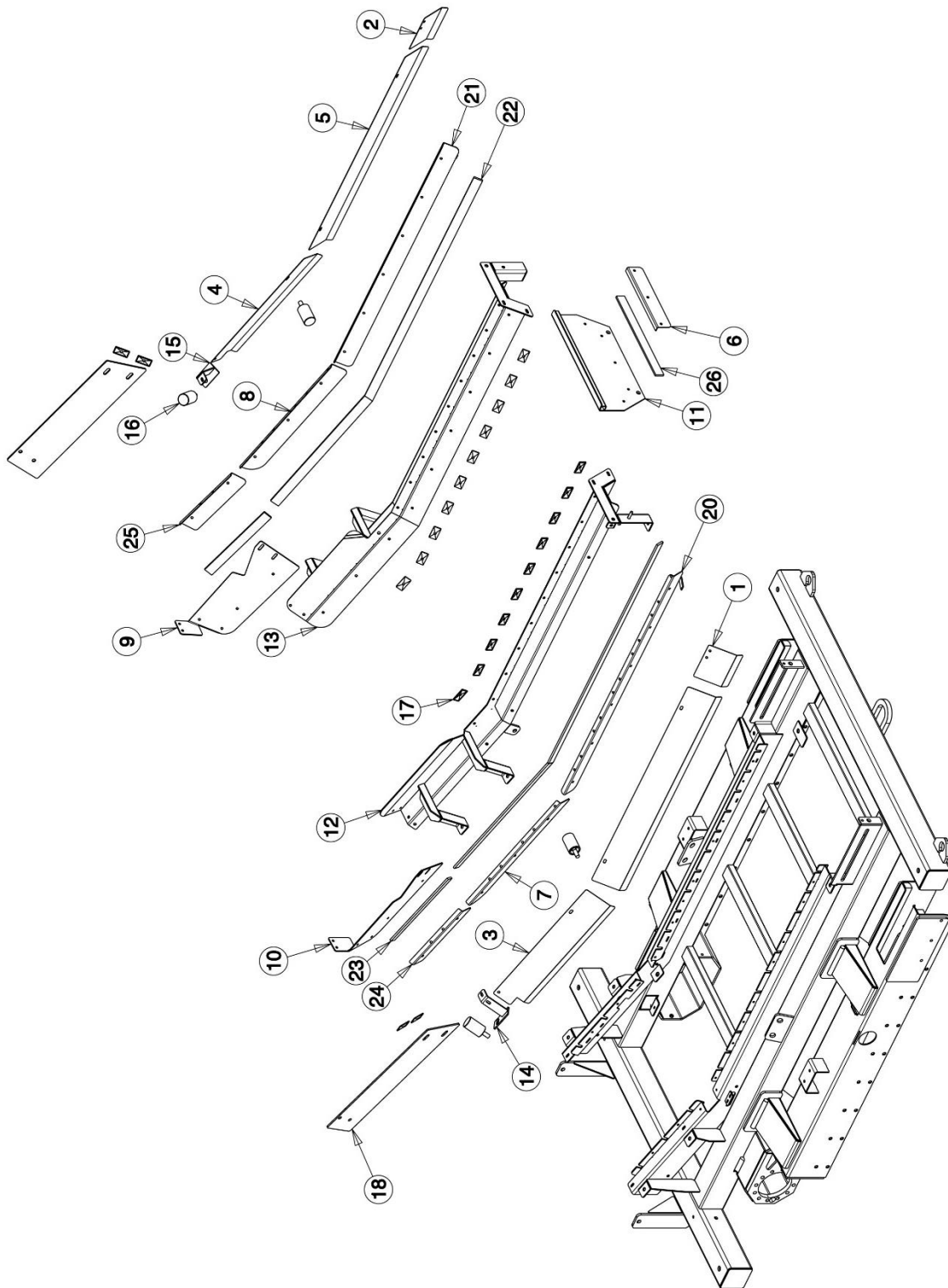
## FIGURE 8- CONVEYOR MID SECTION

ITEM	PART NO	DESCRIPTION	QTY
1	1351	CONVEYOR MIDDLE FRAME	1
2	1492	30 DEG WING ROLLER LH	2
3	1494	30 DEG WING ROLLER RH	2
4	1495	CENTRE ROLLER	2
5	1514	CONVEYOR GUARD HOLDER	2
6	1516	CONVEYOR GUARD HOLDER	1
7	1590	RETURN SCRAPER	1
8	1680	RETURN ROLLER	1
9	3986	CLAMP PLATE	12
10	7589	CONVEYOR GUARD	1
11	7590	SKIRTING RUBBER	2
12	7592	CONVEYOR GUARD	1
13	16164	ROLLER GUARD ASSEMBLED (HEX TYPE)	1
14	16530	SCRAPER RUBBER	1



## FIGURE 9 - CONVEYOR TAIL SECTION

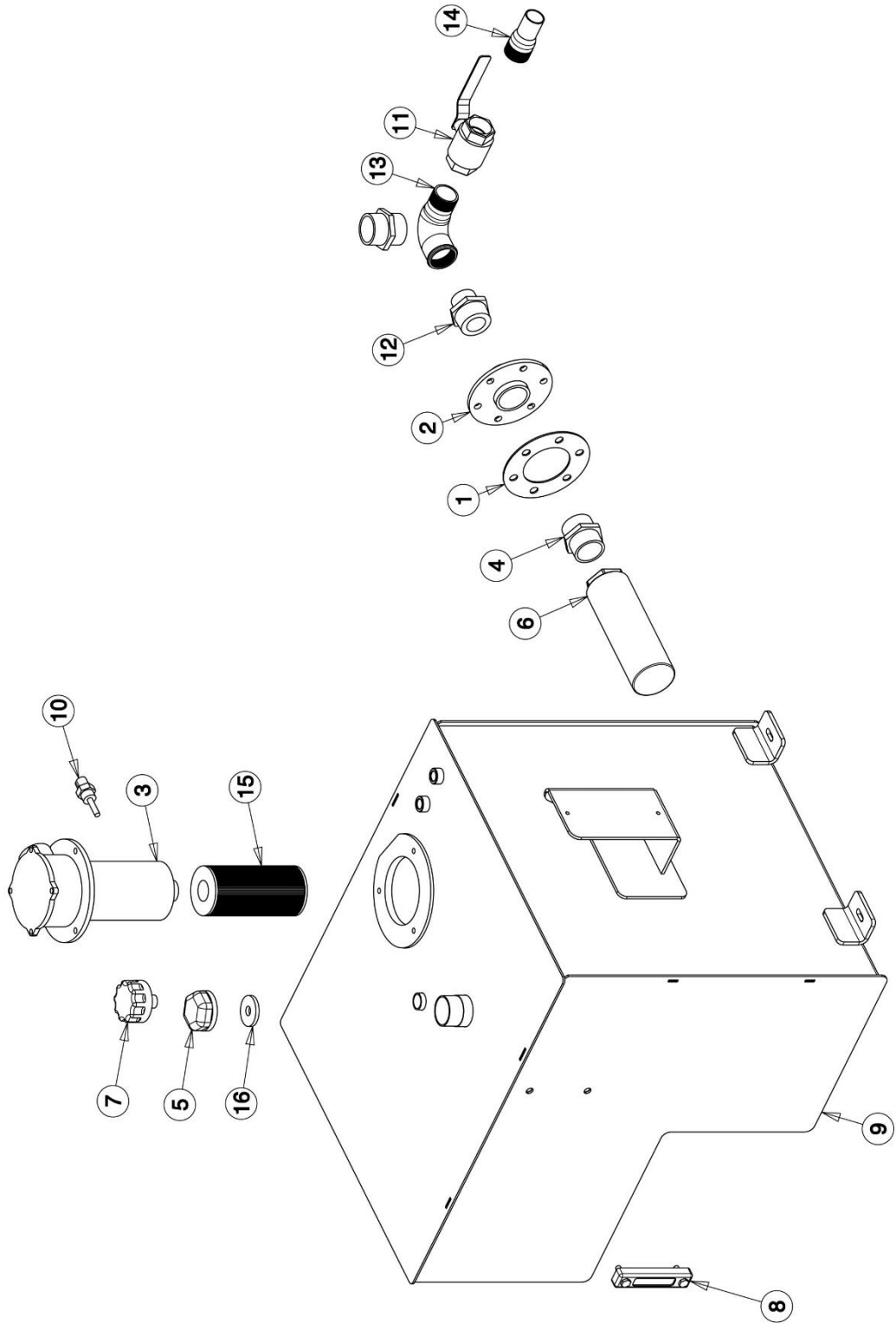
ITEM	PART NO	DESCRIPTION	QTY
1	1166	TAIL DRUM WASHER FLAT	2
2	1444	TRACK FRAME	1
3	1448	BELT BEADING ROLLER BRACKET	1
4	1496	TAIL GUARD	1
5	1610	DRUM ADJUSTER	2
6	1636	TAIL DRUM	1
7	1642	MAIN DECKING	1
8	1678	FYTB BEARING	2
9	1679	RETURN ROLLER	14
10	1680	RETURN ROLLER	1
11	2513	GUIDE ROLLER	4
12	2989	BOLTING FLAT	4
13	6035	CONVEYOR 1 <sup>ST</sup> JOINT RUBBER	1





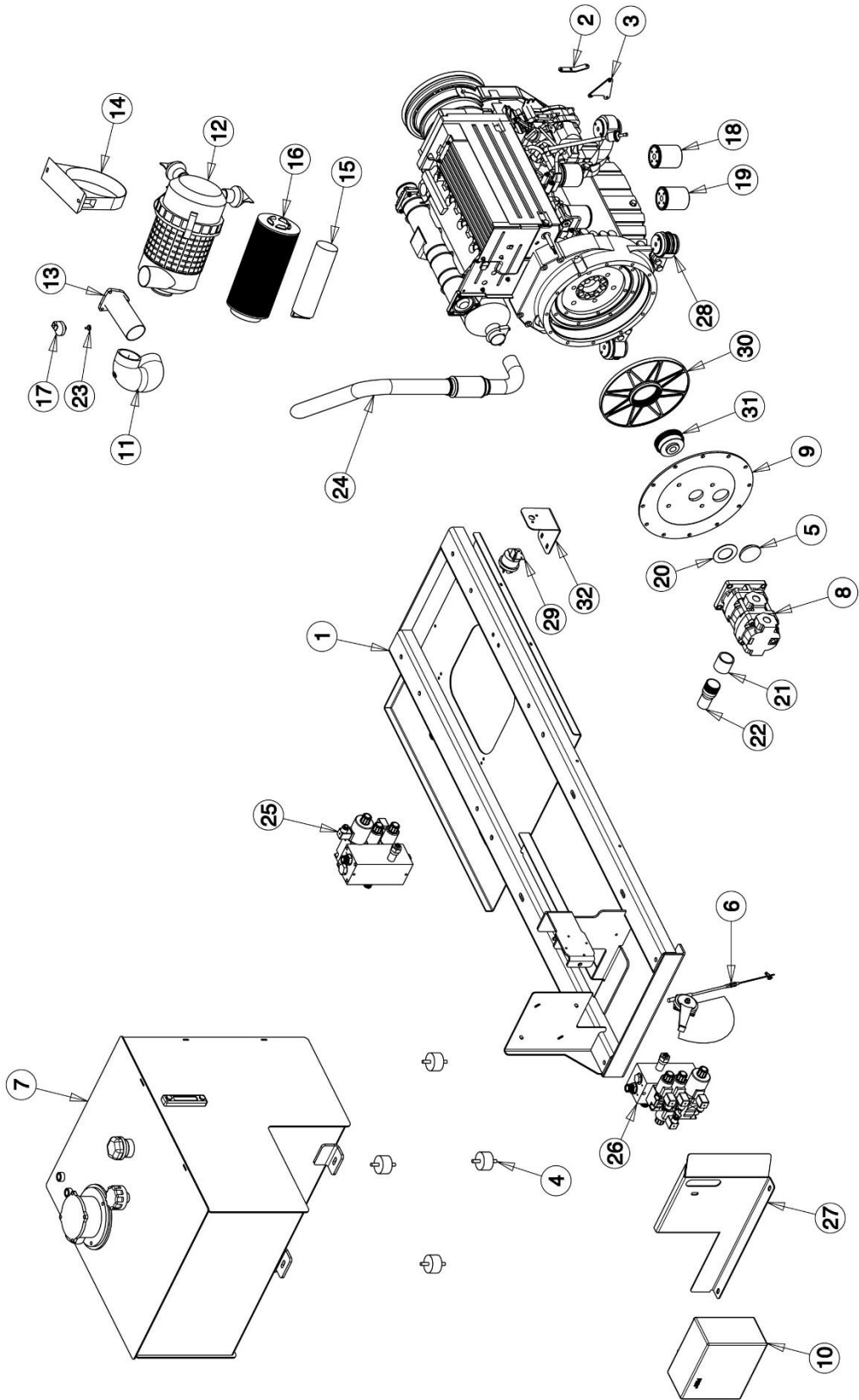
## FIGURE 10 - CONVEYOR FEEDBOOTS

ITEM	PART NO	DESCRIPTION	QTY
1	1005	FEEDBOOT GUARD	1
2	1006	FEEDBOOT GUARD (LH)	1
3	1007	FEEDBOOT GUARD	1
4	1008	FEEDBOOT GUARD (RH)	1
5	1009	FEEDBOOT GUARD (LH)	2
6	1056	BACK CLAMP PLATE	1
7	1057	FEEDBOOT CLAMP	1
8	1058	FEEDBOOT CLAMP (LH)	1
9	1128	FEEDBOOT BOLT-ON EXTENSION	1
10	1129	FEEDBOOT BOLT-ON EXTENSION	1
11	1511	FEEDBOOT BACK PLATE	1
12	1518	FEEDBOOT (LH)	1
13	1519	FEEDBOOT (RH)	1
14	1611	ROLLER BRACKET	1
15	1612	ROLLER BRACKET	1
16	2513	GUIDE ROLLER	4
17	3986	CLAMP PLATE	24
18	6039	CONVEYOR SKIRTING RUBBER	2
19	11485	FRONT CONVEYOR	1
20	16147	FEEDBOOT CLAMP	1
21	16148	FEEDBOOT CLAMP	1
22	20495	SKIRTING RUBBER	2
23	20496	SKIRTING RUBBER	2
24	20497	FEEDBOOT CLAMP	1
25	20498	FEEDBOOT CLAMP	1
26	23003	SKIRTING RUBBER	1



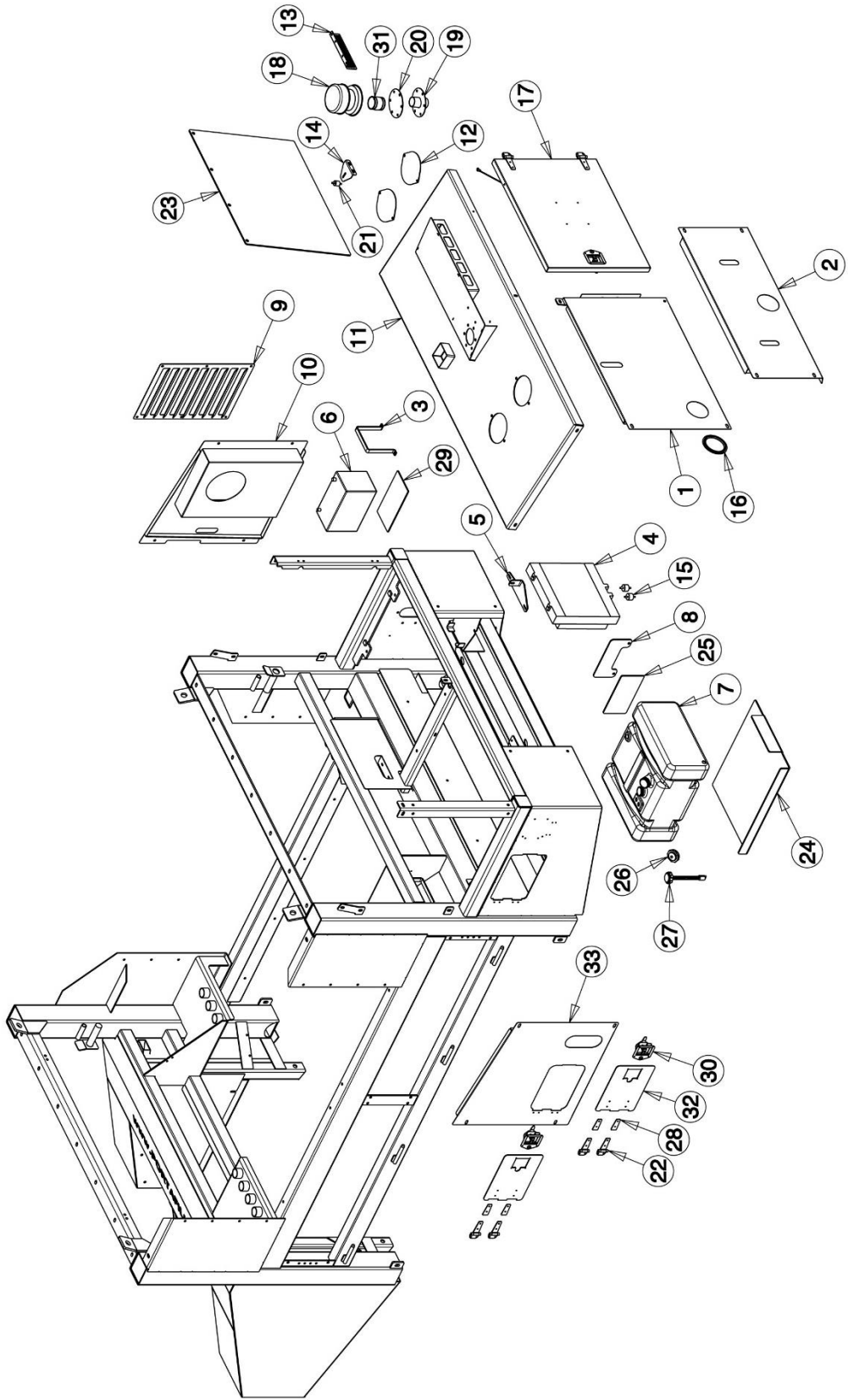
## FIGURE 11 - HYDRAULIC TANK

ITEM	PART NO	DESCRIPTION	QTY
1	1572	TANK FILTER GASKET	1
2	1621	TANK FILTER PLATE	1
3	2338	TANK TOP FILTER	1
4	2839	2" ADAPTER BSP	2
5	2845	2" BSP CAP	1
6	2850	2" BSP STRAINER	1
7	2851	¾" BSP VENT CAP	1
8	2877	OIL LEVEL GAUGE	1
9	3022	HYDRAULIC TANK	1
10	3427	OIL LEVEL SWITCH	1
11	3428	1 ½" BSP LEVER VALVE	1
12	3429	2" – 1 ½" ADAPTER	1
13	5692	1 ½" ELBOW MALE/FEMALE	1
14	5714	1 ½" THREADED PIPE REDUCER	1
15	6118	DONALDSON RETURN FILTER INSERT	1
16	13723	TANK CAP RUBBER SEAL	1



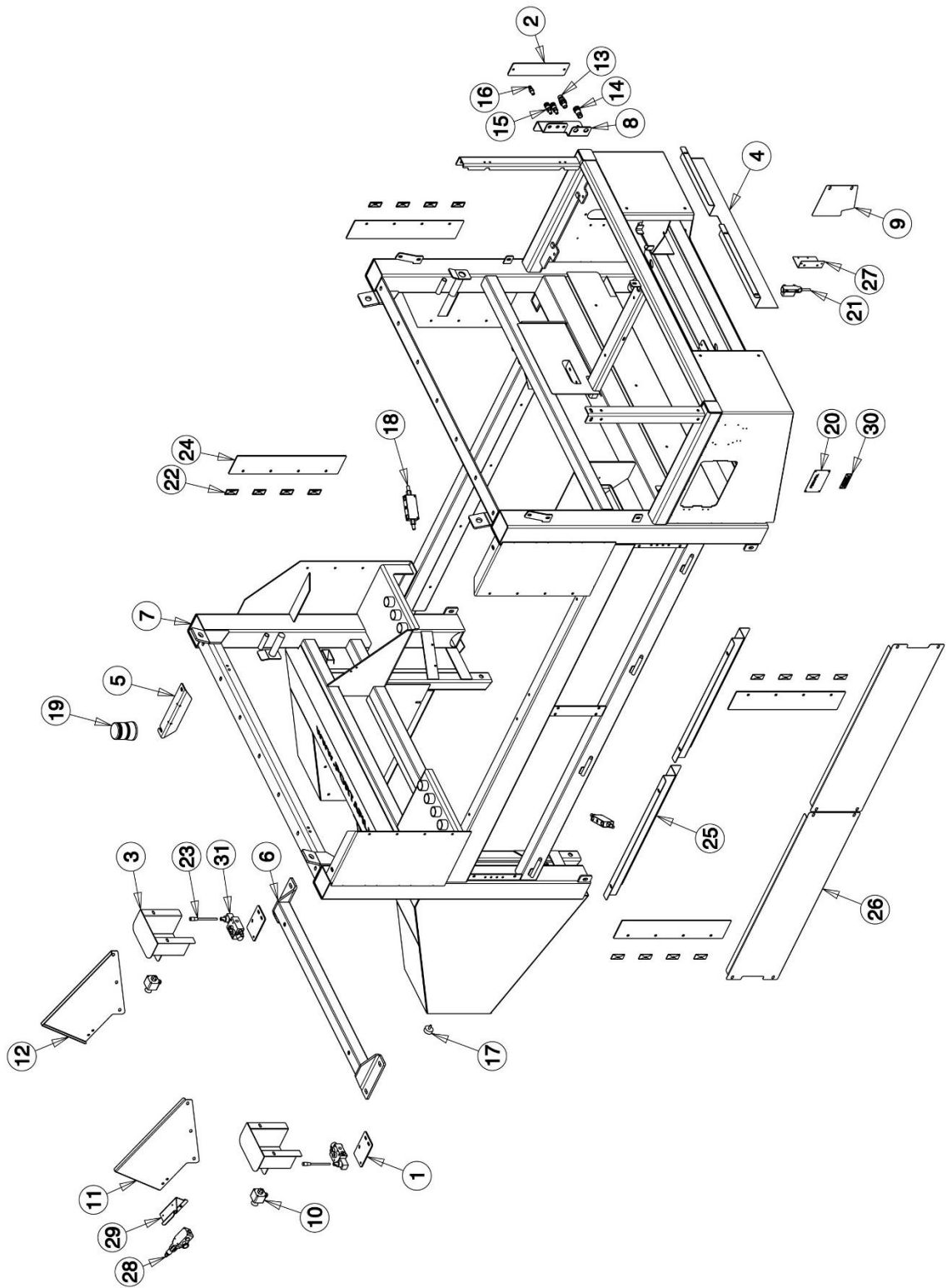
## FIGURE 12 – ENGINE UNIT

ITEM	PART NO	DESCRIPTION	QTY
1	1499	ENGINE FRAME	1
2	2029	THROTTLE LEVER	1
3	2030	THROTTLE BRACKET	1
4	2318	RUBBER DAMPER	4
5	2464	BLANKING GROMMET	1
6	2911	HAND THROTTLE ASSEMBLY	1
7	3026	HYDRAULIC TANK	1
8	3248	TANDEM GEAR PUMP	1
9	3250	PUMP-TO-ENGINE PLATE (DEUTZ)	1
10	3727	CONTROL PANEL	1
11	3893	AIR INTAKE PIPE	1
12	4588	AIR FILTER ASSEMBLY	1
13	4691	FILTER PIPE	1
14	4703	AIR FILTER BRACKET	1
15	5678	AIR FILTER INNER	1
16	5680	AIR FILTER	1
17	5682	AIR FILTER SENSOR	1
18	5683	FUEL FILTER	1
19	5684	OIL FILTER	1
20	5688	ENGINE PLATE WASHER	1
21	5690	1 ½" STRAIGHT BARREL	1
22	5714	1 ½" THREADED PIPE REDUCER	1
23	5992	AIR FILTER SENSOR BOLT	1
24	6503	EXHAUST ASSEMBLY	1
25	6773	CETOP (12V VALVE) (TWIN COIL CENTRE)	1
26	6797	CETOP+HPCOV (12V VALVE) (TWIN COIL CENTRE)	1
27	6858	PIPE BURST GUARD	1
28	7220	DEUTZ ENGINE	1
29	10906	MASTER DISCONNECT SWITCH	1
30	12424	KTR BOWEX PLATE (DEUTZ ENGINE)	1
31	12874	KTR PUMP DRIVE GEAR (DEUTZ ENGINE)	1
32	15820	DEADMAN BRACKET	1



### FIGURE 13 – POWER UNIT

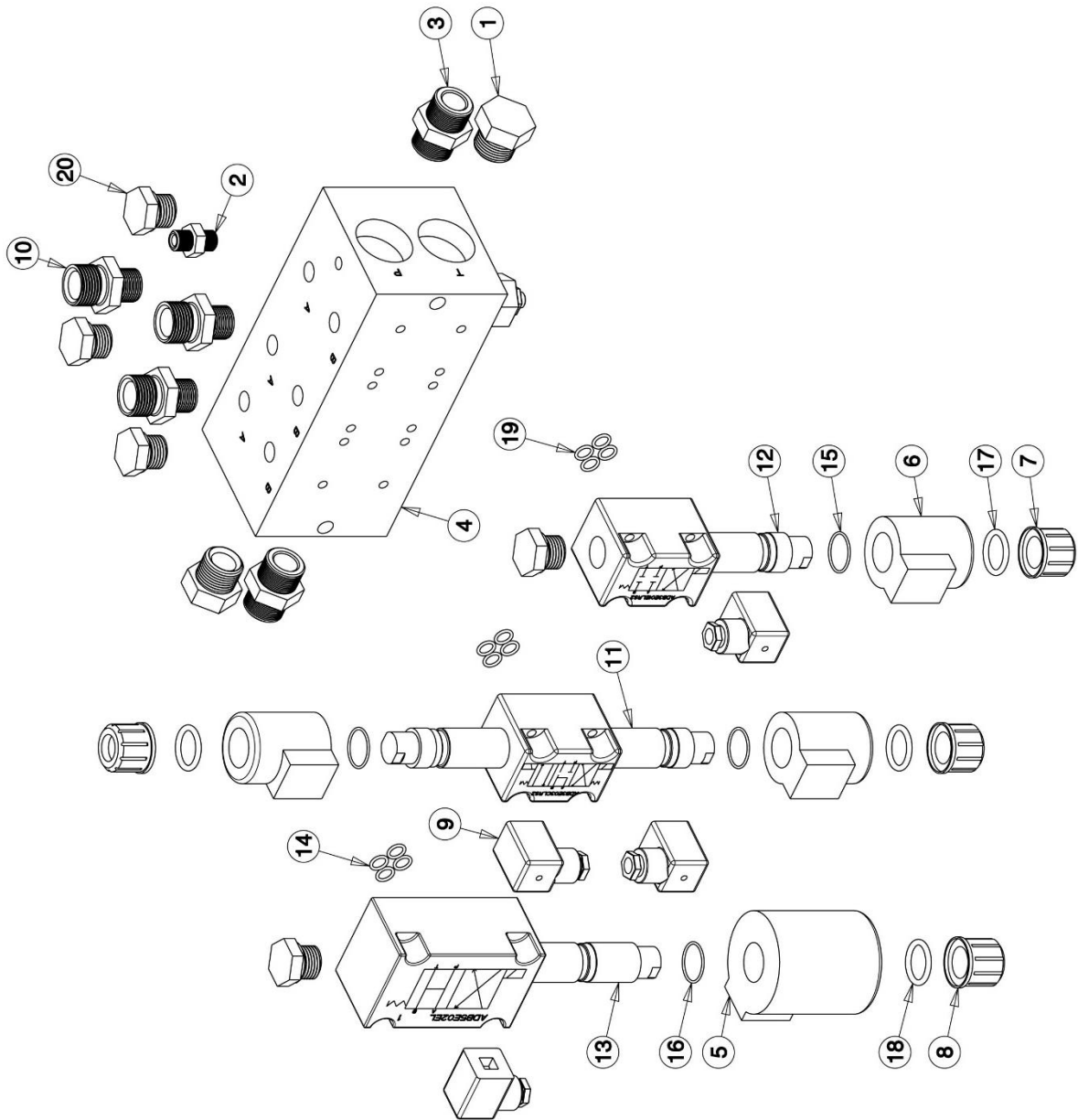
ITEM	PART NO	DESCRIPTION	QTY
1	1482	CONTROL PANEL DOOR	1
2	1504	FRONT GUARD	1
3	1661	BATTERY STRAP	1
4	1697	OIL COOLER	1
5	1699	OIL COOLER BRACKET	1
6	1755	BATTERY 12V	1
7	1773	FUEL TANK	1
8	1864	FUEL TANK CLAMP PLATE	1
9	1994	AIRBOX PLATE	1
10	1999	AIRBOX	1
11	2000	ENGINE FRAME COVER	1
12	2060	TANK TOP FILTER COVER	2
13	2087	AIR INTAKE COVER	1
14	2837	EXHAUST CLAMP	1
15	2838	RUBBER MOUNT	2
16	2998	EDGING RUBBER	1
17	3035	ENGINE DOOR	1
18	3222	AIR PRECLEANER	1
19	3225	AIR PRECLEANER MOUNT	1
20	3226	BLANKING PLATE	1
21	3253	RUBBER DAMPER	1
22	4029	HINGE	4
23	6040	ENGINE COVER RUBBER	1
24	6041	FUEL TANK RUBBER	1
25	6042	FUEL TANK RUBBER	1
26	6207	FUEL TANK CAP	1
27	6208	FUEL TANK GAUGE	1
28	6776	SPACER PLATE	4
29	7304	BATTERY RUBBER	1
30	10031	LATCH	2
31	11176	AIR FILTER PIPE	1
32	13476	ACCESS DOOR	2
33	13478	ENGINE/PANEL GUARD	1





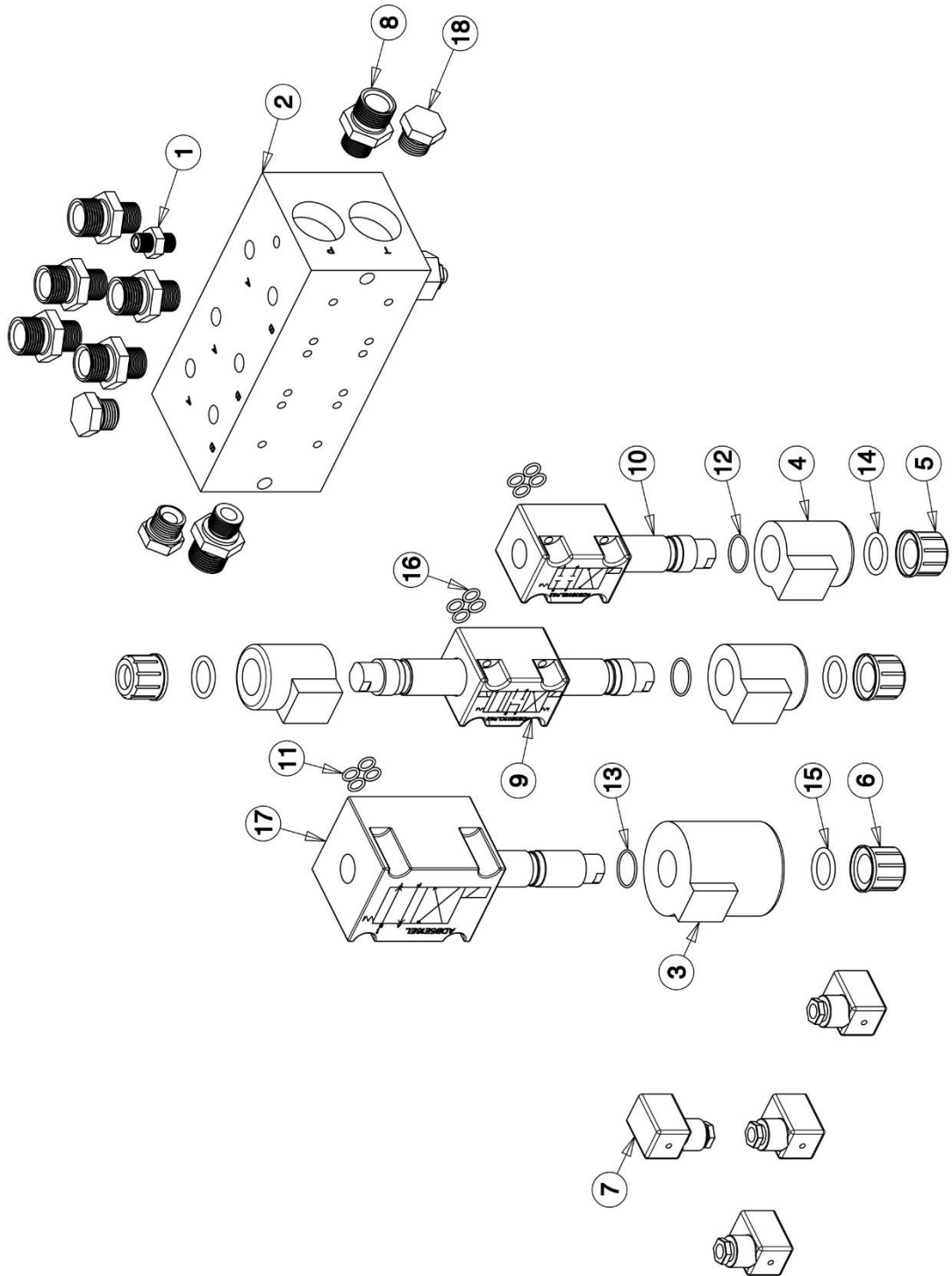
## FIGURE 14 – CHASSIS ASSEMBLY

ITEM	PART NO	DESCRIPTION	QTY
1	1177	CONVEYOR FOLDING BRACKET	2
2	1178	QUICK RELEASE COVER	1
3	1502	PIPE GUARD	2
4	1505	FRONT HOSE DUCT	1
5	1660	BEACON BRACKET	1
6	1671	BOLT-ON CONVEYOR CARRIER	1
7	1793	CHASSIS FRAME	1
8	1830	QUICK RELEASE BRACKET	1
9	2144	DOGLEAD CLOSER PLATE	1
10	2361	MACHINE STOP	2
11	2455	CONVEYOR GUARD	1
12	2456	CONVEYOR GUARD	1
13	3113	QUICK RELEASE MALE $\frac{3}{4}$	1
14	3114	QUICK RELEASE FEMALE $\frac{1}{2}$	1
15	3115	QUICK RELEASE FEMALE $\frac{3}{8}$	2
16	3116	QUICK RELEASE MALE $\frac{3}{8}$	1
17	3187	RUBBER DAMPER	2
18	3270	$\frac{1}{2}$ " OVER-CENTRE VALVE	2
19	3439	FLASHING BEACON	1
20	3730	PORTAFILL SERIAL PLATE	1
21	3984	DOGLEAD PLUG	1
22	3986	CLAMP PLATE	16
23	5377	CONTROL VALVE LEVER	2
24	6033	CHASSIS SIDE RUBBER	4
25	6854	HOSE TRAY COVER PLATE	2
26	6864	UNDER SCREEN ACCESS DOOR	2
27	8193	DOGLEAD MOUNTING BRACKET	1
28	12107	MACHINE STOP	1
29	12112	EMERGENCY STOP BRACKET	1
30	17506	PORTAFILL TPEM SERIAL PLATE	1
31	2967	SINGLE BANK VALVE (UP TO SCT 442)	2
31	21480	SINGLE BANK LEVER VALVE (SCT 443 ONWARDS)	2



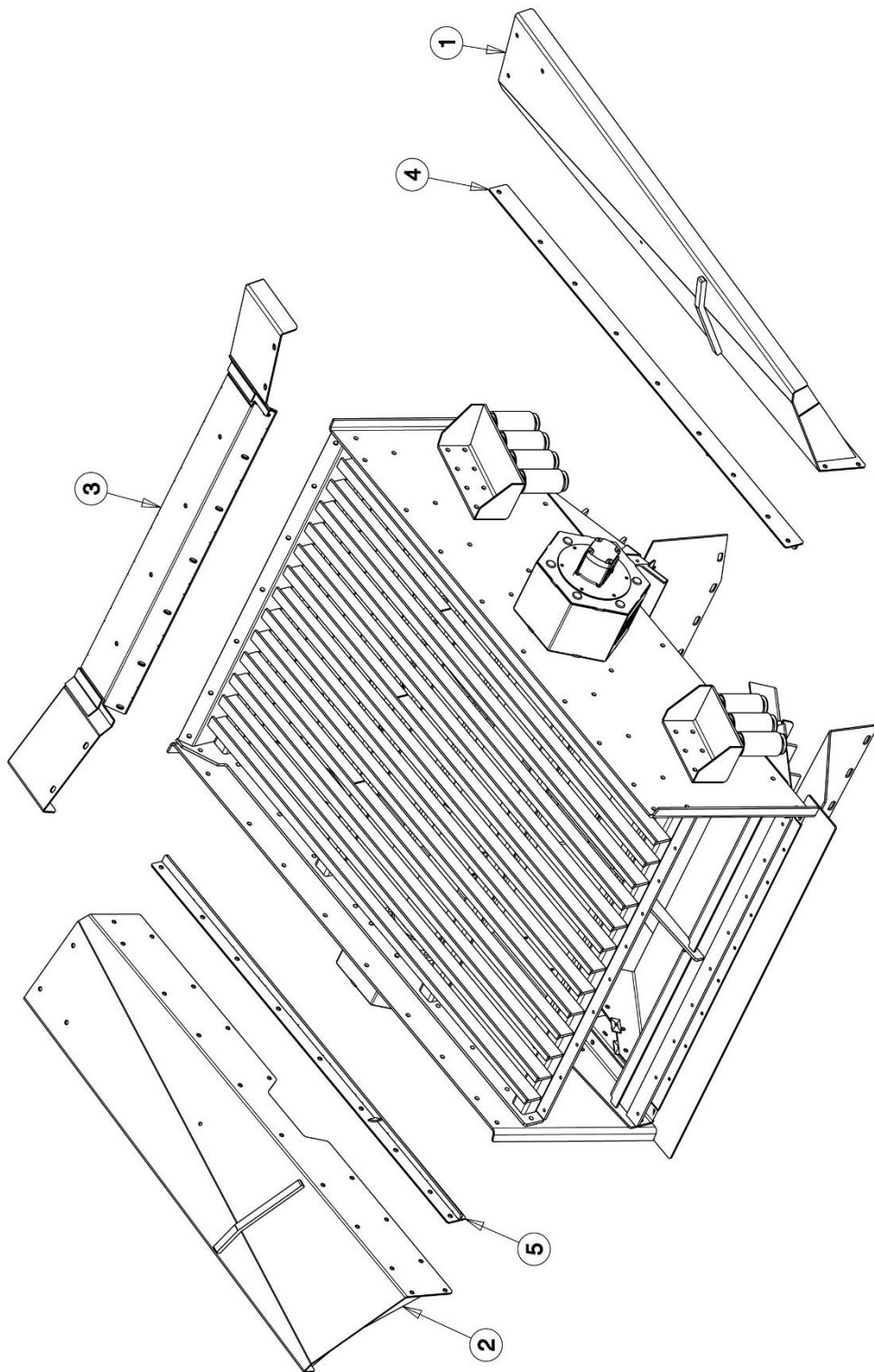
## FIGURE 15 - VALVE (ITEM 6773)

ITEM	PART NO	DESCRIPTION	QTY
1	2626	¾" BSP CAP	2
2	3431	¼" – ¼" ADAPTOR	1
3	3663	¾" – ¾" M/M ADAPTOR	2
4	7336	VALVE MANIFOLD	1
5	7339	12V DC CETOP (5 COIL)	1
6	7340	12V DC CETOP (3 COIL)	3
7	7342	CETOP 3 RETAINING NUT	3
8	9268	CETOP 5 RETAINING NUT	1
9	10114	PLUG	4
10	11818	½" – ¾" ADAPTOR	3
11	14697	CETOP 3 SOLENOID ASSEMBLY (12V VALVE) (TWIN COIL)	1
12	14698	CETOP 3 SOLENOID ASSEMBLY (12V VALVE) (SINGLE COIL)	1
13	14699	CETOP 5 SOLENOID ASSEMBLY (12V VALVE) (SINGLE COIL)	1
14	14700	CETOP 5 SOLENOID MANIFOLD SEAL	4
15	14701	CETOP 3 SOLENOID COIL SEAL	3
16	14702	CETOP 5 SOLENOID COIL SEAL	1
17	14703	CETOP 3 RETAINING NUT SEAL	3
18	14704	CETOP 5 RETAINING NUT SEAL	1
19	14705	CETOP 3 SOLENOID MANIFOLD SEAL	8
20	15419	½" CAP BOLT	5



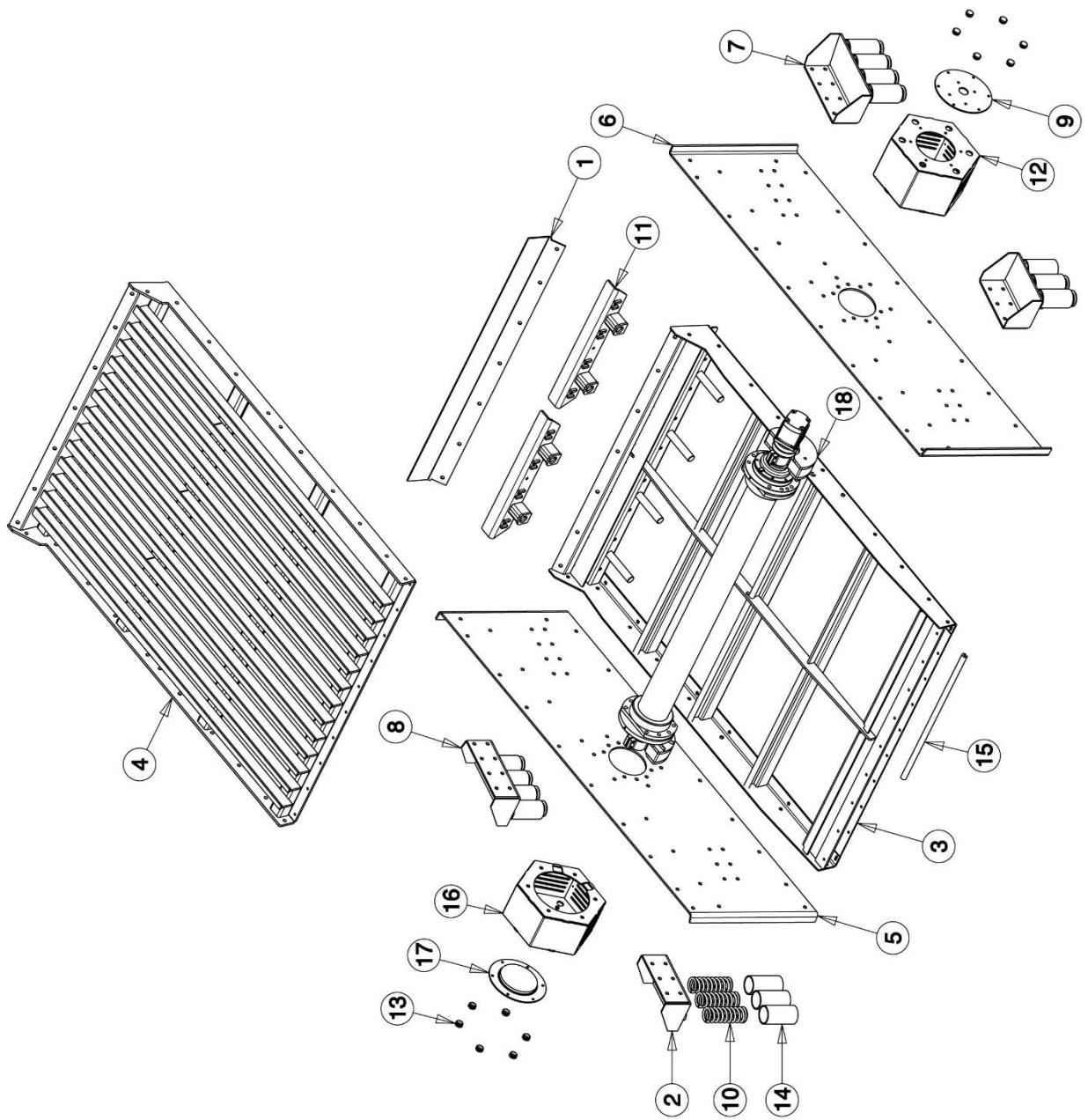
## FIGURE 16 - VALVE (ITEM 6797)

ITEM	PART NO	DESCRIPTION	QTY
1	3431	¼" – ¼" ADAPTOR	1
2	7336	VALVE MANIFOLD	1
3	7339	12V DC CETOP 5 COIL	1
4	7340	12V DC CETOP 3 COIL	3
5	7342	CETOP 3 RETAINING NUT	3
6	9268	CETOP 5 RETAINING NUT	1
7	10114	PLUG	4
8	11818	½" – ¾" ADAPTOR	7
9	14697	SOLENOID ASSEMBLY (12V VALVE) (TWIN COIL)	1
10	14698	SOLENOID ASSEMBLY (12V VALVE) (SINGLE COIL)	1
11	14700	SOLENOID MANIFOLD SEAL	4
12	14701	SOLENOID COIL SEAL	3
13	14702	SOLENOID COIL SEAL	1
14	14703	RETAINING NUT SEAL	3
15	14704	RETAINING NUT SEAL	1
16	14705	SOLENOID MANIFOLD SEAL	8
17	14706	SOLENOID ASSEMBLY (HPCO) (12V VALVE) (SINGLE COIL)	1
18	15419	½" CAP BOLT	3



## FIGURE 17 – SCREEN EXTENSIONS

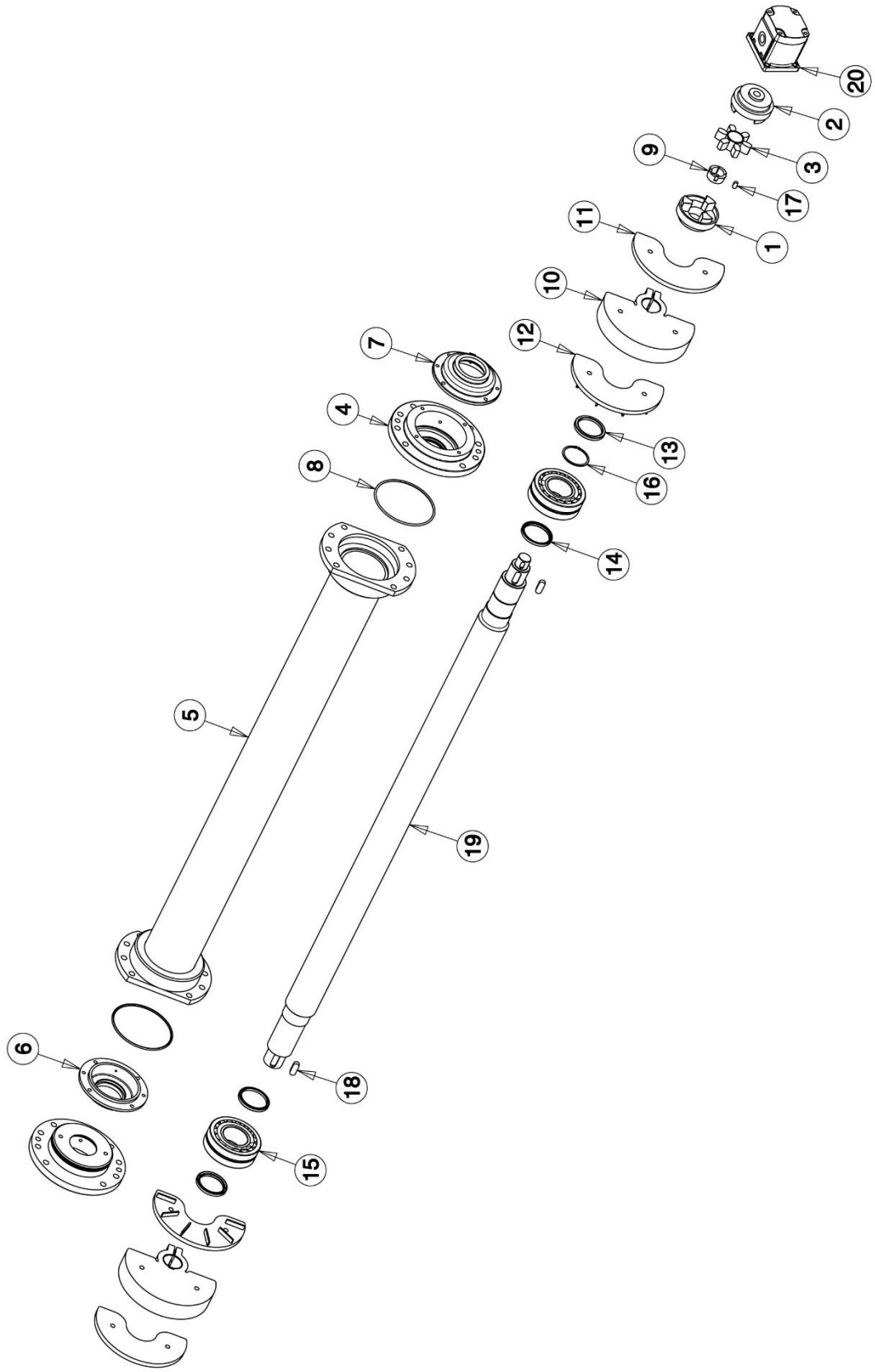
ITEM	PART NO	DESCRIPTION	QTY
1	1529	SCREEN SIDE EXTENSION	1
2	1530	SCREEN SIDE EXTENSION	1
3	1534	SCREEN BACK EXTENSION	1
4	1627	GRIZZLY BOLT-ON EXTENSION	1
5	1628	GRIZZLY BOLT-ON EXTENSION	1





## FIGURE 18 – SCREEN BOX

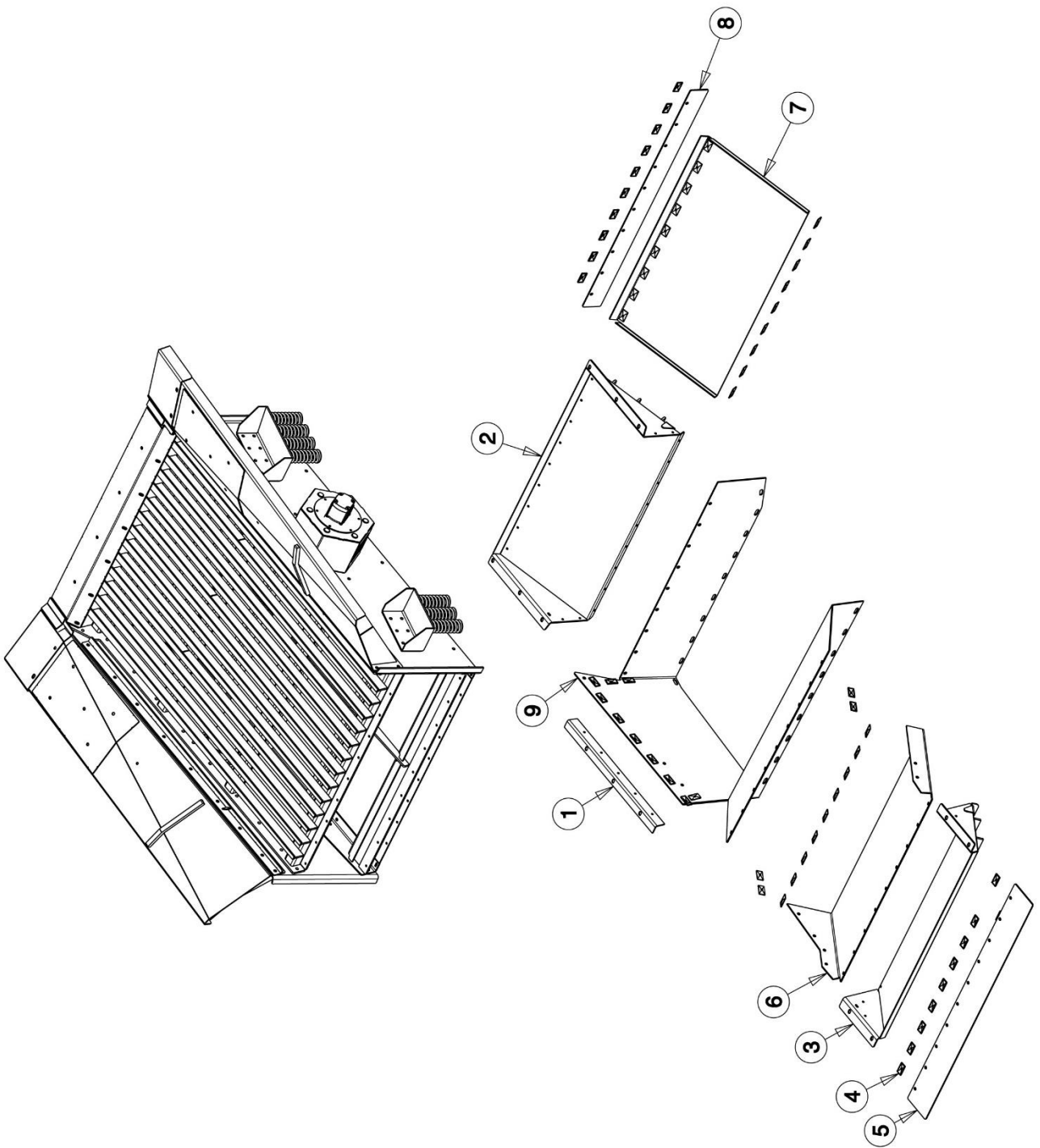
ITEM	PART NO	DESCRIPTION	QTY
1	1230	SCREEN DECK BACK PLATE	1
2	1533	SCREEN STOOL	2
3	1535	SCREEN DECK FRAME	1
4	1536	SCREEN GRIZZLY FRAME	1
5	1579	SCREEN SIDE	1
6	1580	SCREEN SIDE	1
7	1624	BOLT-ON SCREEN STOOL	1
8	1625	BOLT-ON SCREEN STOOL	1
9	2101	SCREEN MOTOR PLATE	1
10	2111	SCREEN SPRING	14
11	3552	CLAMP ASSEMBLY	2
12	5515	MOTOR MOUNT	1
13	5701	PLUG, SMALL BLACK PLASTIC	12
14	5713	SCREEN SPRING COVER	14
15	5780	CAPPING RUBBER	6
16	6310	FLYWHEEL GUARD	1
17	6315	COUNTER BALANCE LID	1
18	11155	SCREEN SHAFT ASSEMBLY	1



## FIGURE 19 – SCREEN SHAFT ASSEMBLY

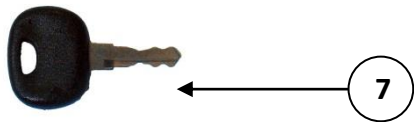
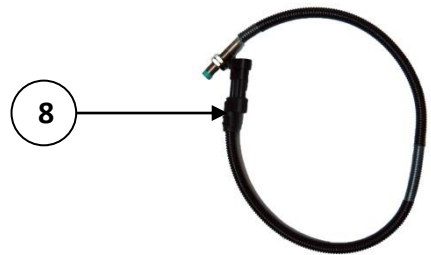
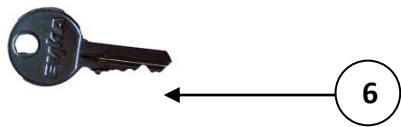
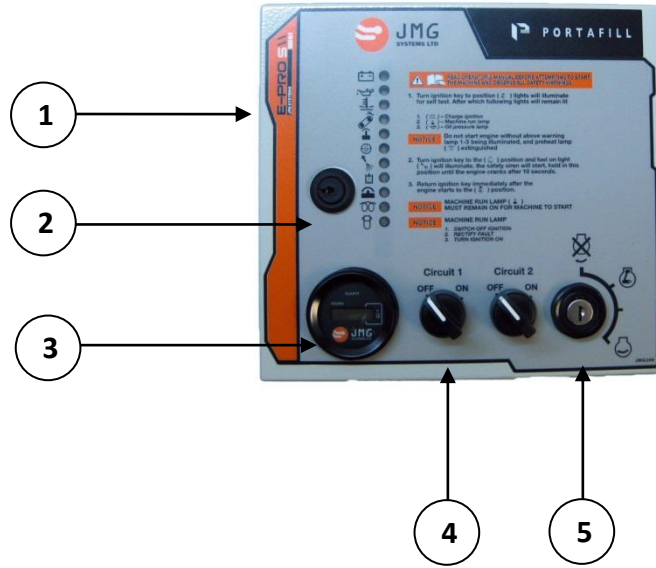
ITEM	PART NO	DESCRIPTION	QTY
1	2098	COUPLING FLANGE (HRC 130F)	1
2	2099	COUPLING FLANGE (HRC 130 BT)	1
3	2100	COUPLING ELEMENT (HRC 130)	1
4	2679	BEARING HOUSING	2
5	2682	VIBRATING SHAFT HOUSING	1
6	2684	BEARING HOUSING CAP	1
7	2685	BEARING HOUSING CAP (FLOATING)	1
8	2985	O-RING	2
9	4097	TAPER BUSH 160-40	1
10	5521	FLYWHEEL	2
11	6504	COUNTERWEIGHT	2
12	6505	COUNTERWEIGHT	2
13	8715	SEAL	2
14	8716	SEAL	2
15	8717	SCREEN BEARING	2
16	8718	80MM EXTERNAL CIRCLIP	1
17	11062	12 X 8 X 23MM LONG KEYSTEEL	1
18	11063	18 X 11 X 48MM LONG KEYSTEEL	2
19	11154	VIBRATING SHAFT	1
20	2103	SCREEN MOTOR (UP TO SRL NO 422)	1
20	14139	SALAMI SCREEN MOTOR (SRL NO 423 TO 426)	1
20	16878	SALAMI SCREEN MOTOR (SRL NO 427 ONWARDS)	1

\*NEW HYDRAULIC HOSE REQUIRED FOR MOTOR CHANGE OVER



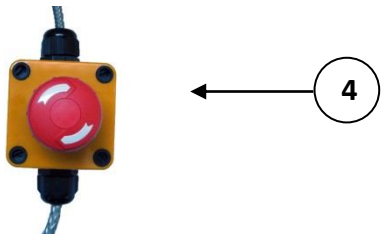
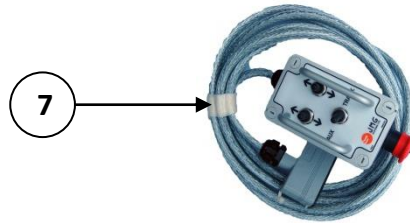
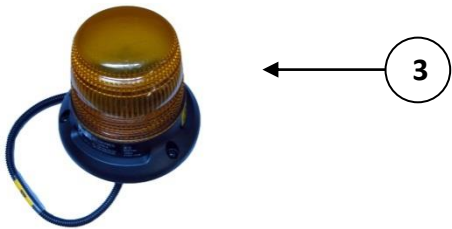
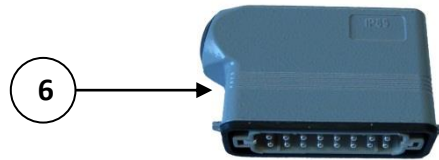
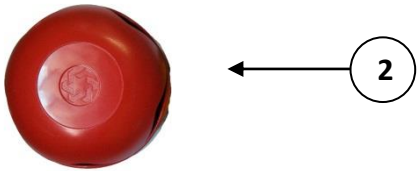
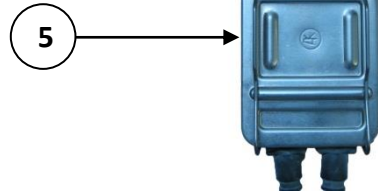
## FIGURE 20 – SCREEN CHUTE & RUBBERS

ITEM	PART NO	DESCRIPTION	QTY
1	1278	CHUTE ANGLE	1
2	1522	BIG CHUTE	1
3	1523	SMALL CHUTE	1
4	3986	CLAMP PLATE	61
5	6044	SCREEN BOX SKIRTING RUBBER	1
6	6046	SCREEN CHUTE RUBBER	1
7	6215	SCREEN CHUTE RUBBER	1
8	8194	SCREEN BOX SKIRTING RUBBER	1
9	8195	SCREEN RUBBER	1



## FIGURE 21 - CONTROL PANEL ACCESSORIES

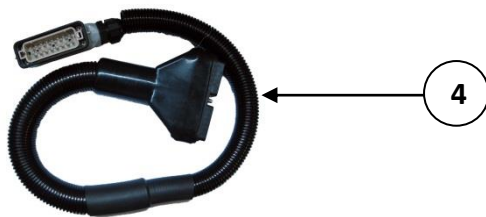
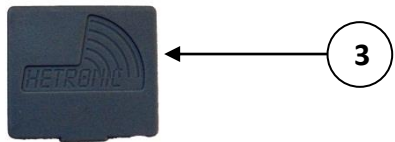
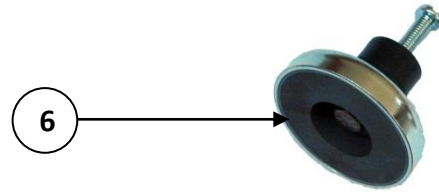
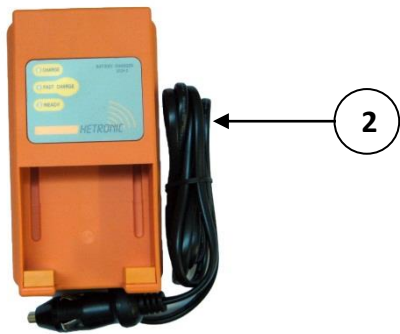
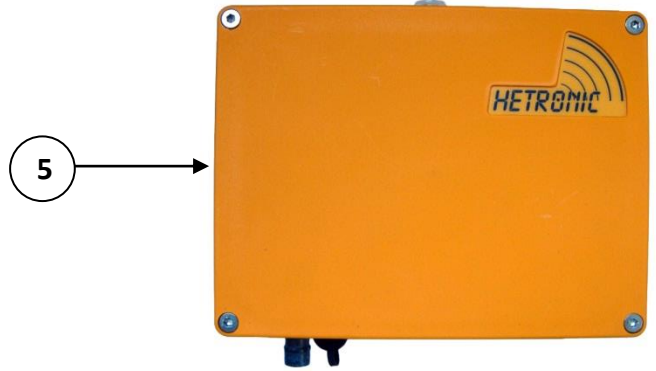
ITEM	PART NO	DESCRIPTION	QTY
1	5815	2000CT CONTROL PANEL	1
2	9319	CONTROL PANEL LOCK	1
3	7548	HOUR CLOCK	1
4	7531	CONTROL CIRCUIT SWITCH	1
5	7477	IGNITION SWITCH	1
6	8919	CONTROL PANEL KEY (1242)	1
6	6771	CONTROL PANEL KEY (92201)	1
7	6770	IGNITION KEY	1
8	3891	PROXIMITY SENSOR	1





## FIGURE 22 - ELECTRICAL ACCESSORIES

ITEM	PART NO	DESCRIPTION	QTY
1	3427	HYDRAULIC OIL LEVEL SENSOR	1
2	7476	SIREN	1
3	6355	FLASHING BEACON	1
4	2361	EMERGENCY STOP BOX	1
5	9320	JUNCTION BOX – 6 WAY	1
6	9254	DOGLEAD BLANKING PLUG	1
7	8524	DOGLEAD AND TRACKING HANDSET REMOTE	1
7	8694	DOGLEAD SWITCH ON/OFF	1
7	8695	DOGLEAD SWITCH FORWARD / REVERSE	1
8	9321	(2000CT) BATTERY LEAD KIT	1
9	14393	DOGLEAD AND TRACKING HANDSET REMOTE	1



## FIGURE 23 - TRACKING RADIO REMOTE

ITEM	PART NO	DESCRIPTION	QTY
1	9322	TRACKING RADIO REMOTE HANDSET	1
2	8469	BATTERY CHARGER	1
3	8470	TRACKING RADIO REMOTE BATTERY	1
4	9323	RADIO REMOTE RECEIVER LINK LOOM	1
5	9324	TRACKING RADIO RECEIVER	1
6	9325	TRACKING RECEIVER MAGNET FEET	4
7	9326	TRACKING RECEIVER ANTENNA	1